

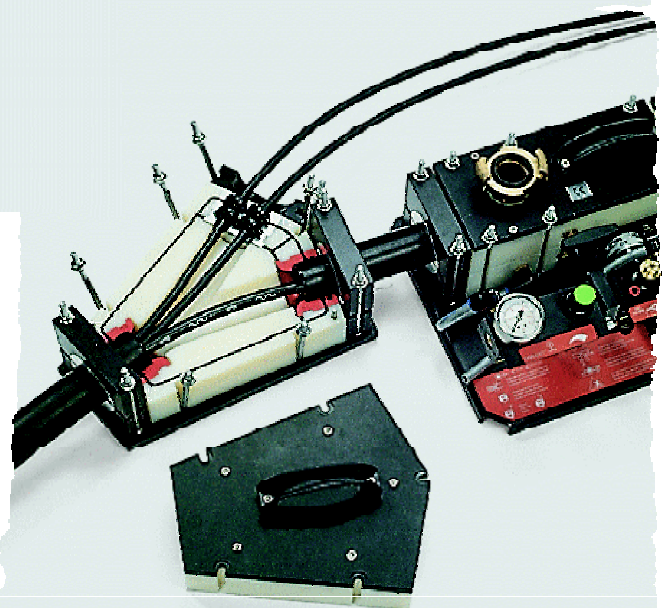
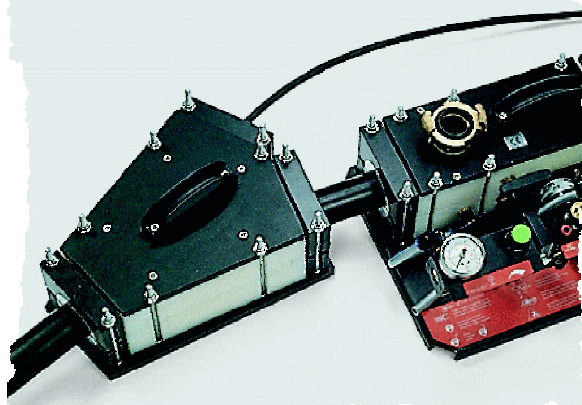
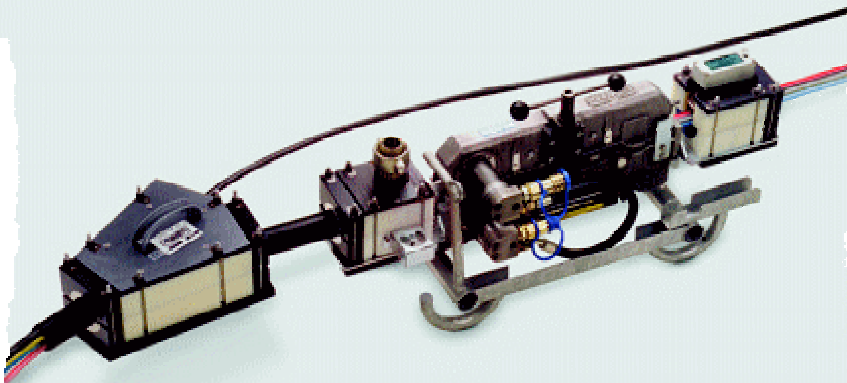
Universal -

Connector used to install an additional cable in an already occupied duct by means of « Jetting » or floating. It is used together with either a *CableJet* or a *SuperJet*.

Characteristics :

- Performance obtained corresponds to at least 50% of the one achieved with the first cable
- One branch of the Y-connector, connected to the *CableJet/SuperJet*, is used for feeding the second cable in the duct.
- Can also be used for the simultaneous installation of two cables. In this case, two *CableJet/SuperJet* are used, each of the two being connected to one branch of the Y-connector
- Installation distance achieved with two additional cables is nearly the same as the one obtained with one cable

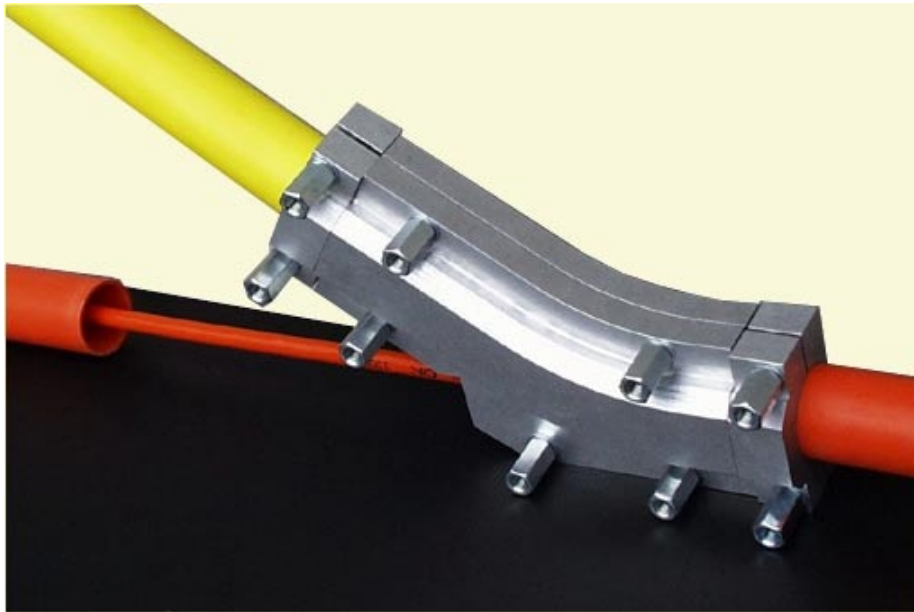
Type	Outer diameter of duct (mm)	Cable diameter (mm)	Max operating pressure (bar)	Dimensions (mm)	Weight (kg)
Y connector	20-63	9-36	12	355x290x182	13



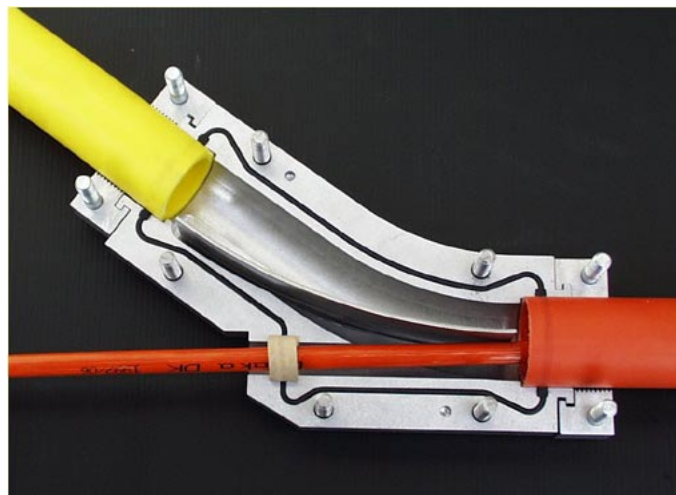
Y - compact (for confined spaces)

Advantages :

- ☑ Small and light
- ☑ Allows access to very narrow chambers
- ☑ Easy transportation
- ☑ Easy maintenance
- ☑ Easy manipulation (possibility to use it in both directions)



Type	Outer diameter of duct (mm)	Cable diameter (mm)	Max operating pressure (bar)	Dimensions (mm)	Weight (kg)
Y 40/40/18	40	6-18	12	310x205x95	4.7
Y 50/50/18	50	6-18	12	310x205x95	4.7



** other dimensions available on request*